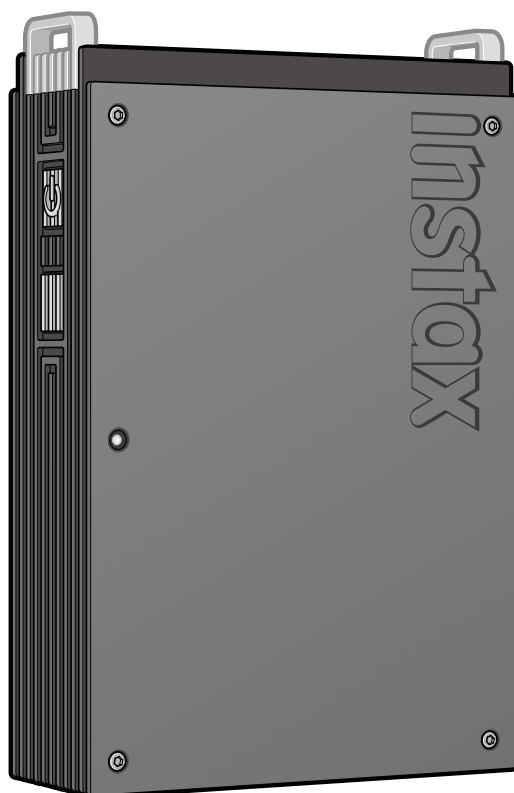


**FUJIFILM**

# **instax mini Link+™**

Smartphone Printer

**User's Guide (Full version)**



## Installing the App

Please install the instax mini Link™ Smartphone App before using the printer.

- If you are using an Android OS Smartphone, please search for the instax mini Link™ Smartphone App in the Google Play Store and install it.  
\*Requirements for Android OS Smartphones: Android Ver. 10.0 or higher with Google Play Store installed
- If you are using an iOS Smartphone, please search for the instax mini Link™ Smartphone App in the App Store and install it.  
\*Requirements for iOS Smartphones: iOS Ver. 16.0 or higher
- Even if you have downloaded the App and your Smartphone meets the above requirements, you may not be able to use the instax mini Link™ Smartphone App. This is dependent upon your Smartphone model.

Visit the instax mini Link™ App download site for the latest information on system requirements.

Scan to download the instax mini Link™ Smartphone App



iOS



Android OS

The text QR code itself is a registered trademark and wordmark of Denso Wave Incorporated.

## Note when handling the instax™ mini instant film cartridge

Do not open the film door until you have used up all of the film; otherwise, the rest of the film is exposed and turns white. The film can no longer be used.

## Table of Contents

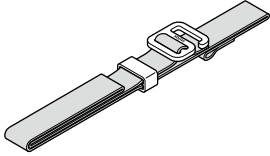
Installing the App .....	2
Note when handling the instax™ mini instant film cartridge.....	2
Before Use .....	3
Attaching the Strap.....	3
Part Names.....	4
Charging the Battery .....	5
LED charging status indicator .....	5
Checking Battery Status.....	5
Loading the instax™ mini Film Cartridge .....	6
Turning the Printer on/off.....	7
Printer Status – LED Light Indicator .....	7
Connecting the Printer to Your Smartphone .....	7
Connecting to the Printer for the first time .....	7
When the Printer and Smartphone are already paired .....	10
Print an Image from the Camera Roll .....	10
Collecting Images in the App and Printing .....	11
Printing Images in the Collection .....	11
Unloading the instax™ mini Film Cartridge.....	12
Reprinting an Image .....	12
Controlling the App using the orientation of the Printer and Power Button.....	13
Controlling the Zoom and Shutter release with the in-App “instax Camera” mode .....	13
Important Notice for instax AiR Studio™ .....	14
Notes on Disposing of the Printer .....	15
When Disposing of the Battery.....	15
Installing a Battery .....	16
Specifications .....	16
Troubleshooting .....	17
IMPORTANT SAFETY NOTICE.....	18
Simple Printer Care.....	18
Bluetooth® Devices: Cautions.....	19

## Before Use

Before using the printer, check you have the following:

### Supplied Accessories

- USB Type-C cable (FZ00013220) (1)
- Strap (1)



- User's Guide (1)

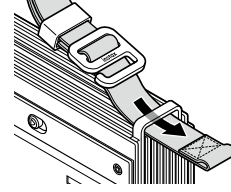
- ❗ The battery has not been fully charged at the factory, be sure to charge the battery before using the printer.
- ❗ Bundled USB Type-C cable is dedicated to charge the Link printer.

Read 'IMPORTANT SAFETY NOTICE' (Page 18) for safety information.

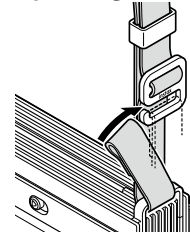
## Attaching the Strap

Attach the strap to the strap eyelet on one side of the printer.

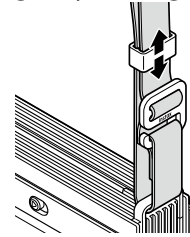
- 1 Thread the end of the strap through the strap eyelet.



- 2 Thread the loop at the end of the strap through the buckle of the strap fitting and secure the strap.



- 3 Adjust strap length by moving the slider.

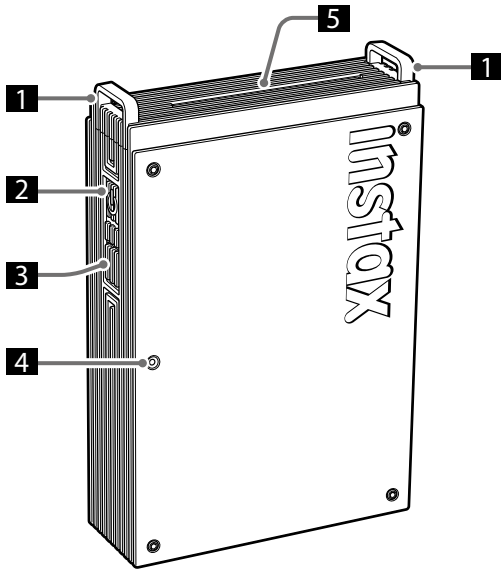


- Use the strap over your wrist, not around your neck.
- Make sure the strap does not hang over the film ejection slot.

## Part Names

❗ When using the printer for the first time, ensure that the battery is fully charged.

Front

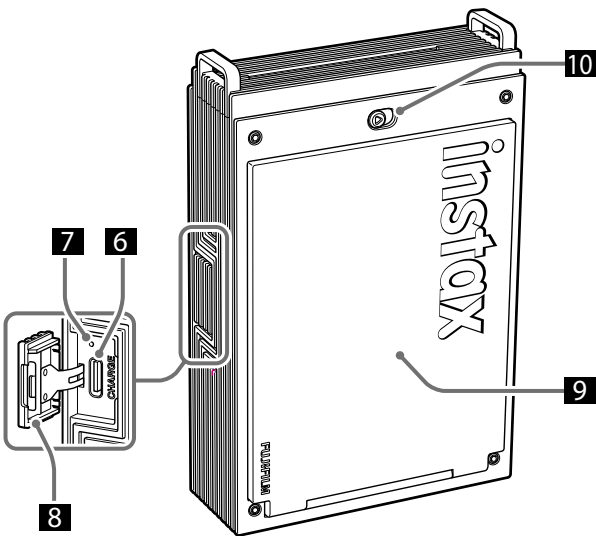


- 1 Strap eyelet
- 2 Power button
- 3 Function button
- 4 LED\*<sup>1</sup>
- 5 Film ejection slot
- 6 USB Type-C port
- 7 Reset button\*<sup>2</sup>
- 8 USB Type-C port cover
- 9 Film door
- 10 Film door lock

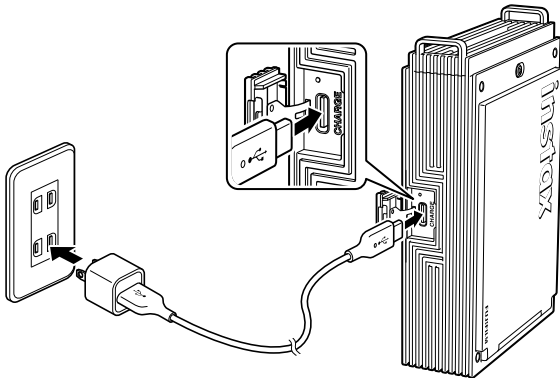
\*<sup>1</sup> For details on LED indication status, see pages 5 to 7.

\*<sup>2</sup> If the printer does not work properly, press the Reset button to reset the printer.

Rear



## Charging the Battery



Connect the printer using the supplied USB Type-C cable to a USB AC adapter (not included) then connect the USB AC adapter to an indoor power supply.

- You can print images whilst the printer is charging.
- Charging time is approximately 1.5 to 2 hours.

### LED charging status indicator

When the printer is turned on

LED	Charging status
White LED (static LED)	Not charging
Green LED (static LED)	Charging complete
Green LED (flashing)	Charging

When the printer is turned off

LED	Charging status
LED turned off	Not charging / charging complete
Green LED (flashing)	Charging

### Charging from a PC:

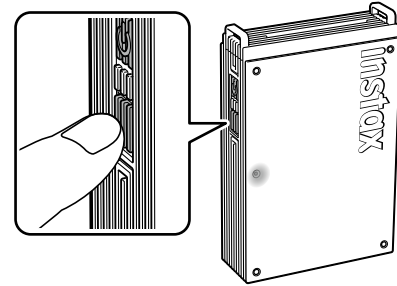
- Connect the printer and PC directly. Do not connect via a USB hub or keyboard.
- If the PC goes into sleep mode while charging, charging is paused. To continue charging, exit sleep mode and then reconnect the USB Type-C cable.
- The battery may not be able to charge depending on the specifications, settings or conditions of the PC.

### Notes

- The battery is not fully charged at the factory, be sure to charge the battery before using the printer.
- For notes about the battery, see "Simple Printer Care". (p.18)

## Checking Battery Status

Pressing the Function button while the printer is turned on shows the battery status.



LED	Charging status
Flashes green once	Low battery level
Flashes green twice	Middle battery level
Flashing green three times	High battery level

Check the charging status with your Smartphone when connected to the App.

## Loading the instax™ mini Film Cartridge

### Caution

Do not open the film door until you have used up all of the film; otherwise, the rest of the film is exposed and turns white. The film can no longer be used.

- When you load the film cartridge, never press the two rectangular holes on the back of the film cartridge.
- Never use a film cartridge beyond its shelf life; otherwise, it may damage the printer.

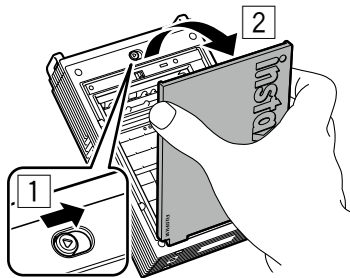
Use FUJIFILM instax™ mini Instant Film only. instax™ SQUARE film and instax™ WIDE film cannot be used.

### Notes on the film cartridge

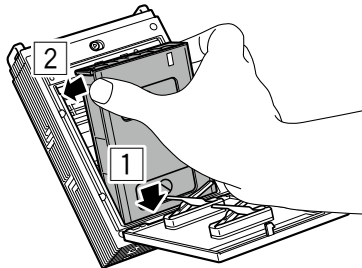
- Each FUJIFILM instax™ mini film cartridge contains a black protective cover and 10 film sheets.
- Do not remove the film cartridge from its inner foil packaging until you are ready to load the film into the printer.
- The film cover is ejected automatically when the film door is closed.

For details, refer to the instructions and warnings on FUJIFILM instax™ mini Instant Film packaging.

- 1** Slide & hold the film door lock in place, then open the film door.



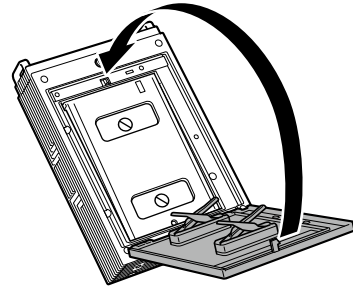
- 2** Insert a film cartridge by aligning the yellow marks on the film cartridge and the body of the printer.



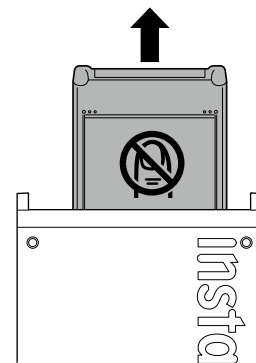
### Note

Be sure to align the yellow marks on the printer and on the film cartridge.

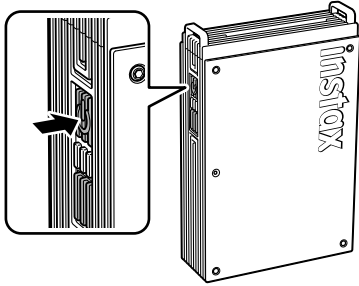
- 3** Close the film door.



- 4** A black protective cover will be automatically ejected, remove and dispose.



## Turning the Printer on/off



Press and hold the Power button for approximately 1 second to turn the printer on or off.  
The LED lights up when the printer is turned on.  
The printer turns off automatically when not in use for a certain period of time.

## Printer Status – LED Light Indicator

The LED light indicates the printer status.

Indication	Status
Blue LED (flashing)	Firmware is being updated
White LED (pulsing)	Reprinting
Yellow LED (static - the printer will turn off in 3-seconds)	Cannot be charged Low battery
Yellow LED (flashing)	Film ejection error occurred

## Connecting the Printer to Your Smartphone

You can enjoy creating various prints such as adding text and applying filters to images with the functions of the instax mini Link™ App.

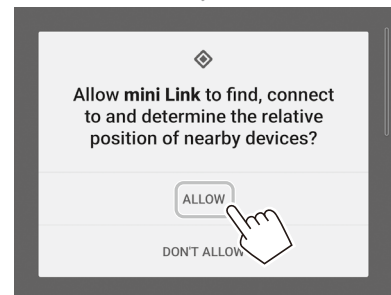
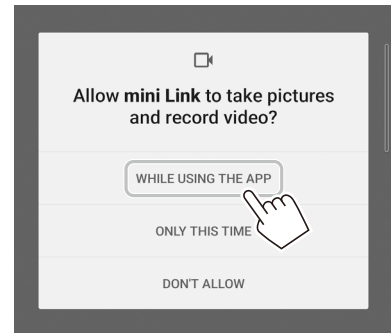
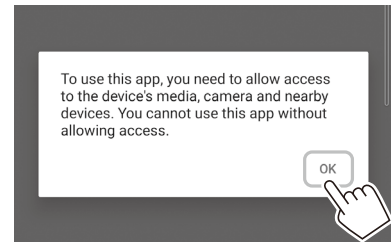
For details on how to use the App, refer to the following site:  
[https://instax.com/mini\\_link\\_plus/](https://instax.com/mini_link_plus/)

### Connecting to the Printer for the first time

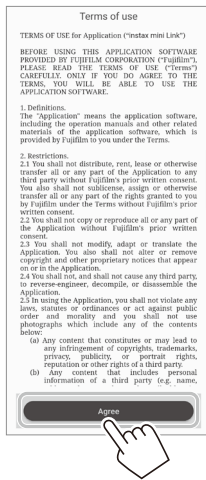
#### 1 Open the “instax mini Link™” App.



#### 2 App setup process



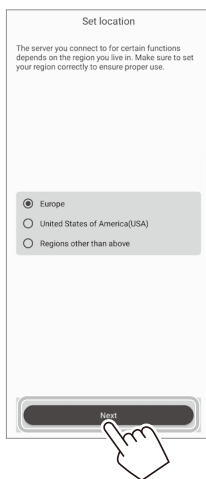
### 3 Read the the terms of use, and tap [Agree].



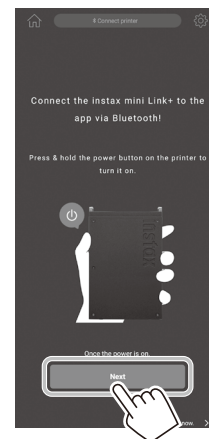
### 6 Select [mini Link+] on the Select printer screen and tap [Next].



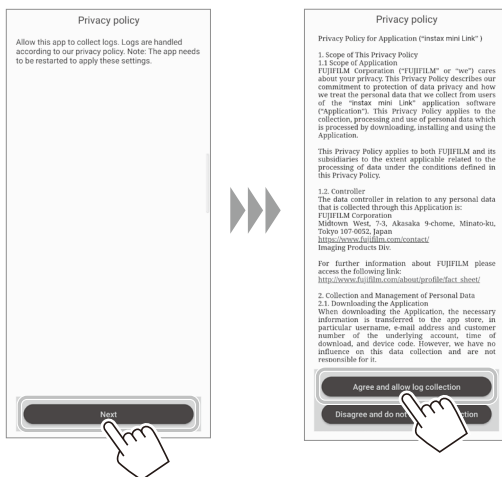
### 4 Select your region then tap [Next]. If you are using the printer in Europe, select [Europe].



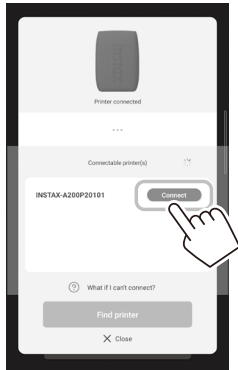
### 7 When the following screen appears, turn the printer on and tap [Next].



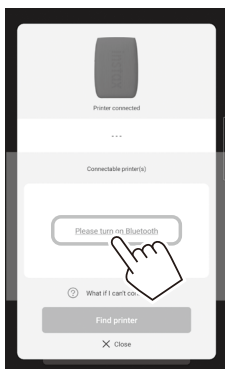
### 5 Tap [Next], read the privacy policy, and tap [Agree and allow log collection].



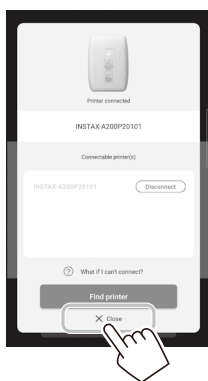
- 8 When the printer is detected, tap [Connect].**  
 If multiple printers are detected, select the printer to connect from the list.  
 The printer's identifier (device name) is located on the bottom of the printer.



**Note**  
 When your Bluetooth settings are switched off, tap [Please turn on Bluetooth] to turn the Bluetooth settings on.



- 9 When the printer is connected, tap [Close].**

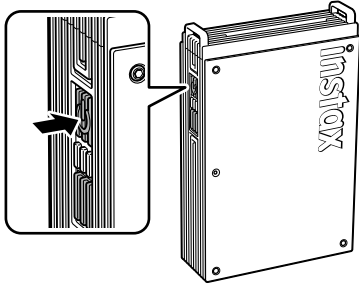


- 10 A quick-start guide is displayed. Read the instructions and tap [Let's Play!].**



**When the Printer and Smartphone are already paired**

- 1 Press and hold the Power button for approximately 1 second to turn the printer on.  
The LED lights up.

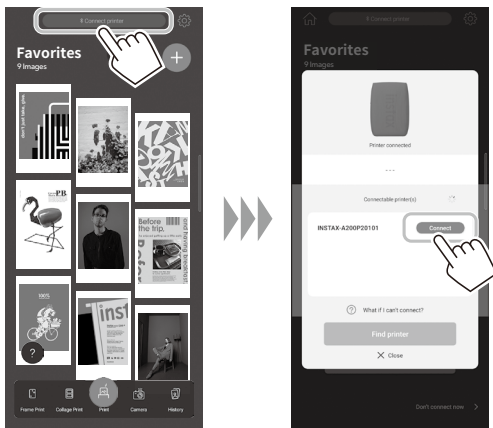


- 2 Open the "instax mini Link™ App."



- 3 Tap [Connect printer] located at the top of the screen.

Select the printer you want to connect from the Connectable printer(s) list, and tap [Connect].



**Print an Image from the Camera Roll**

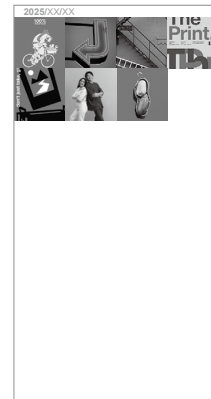
- 1 Tap , then tap [Simple Print] or [Design Print].



**Notes**

You can use the [Design Print] option when the image size exceeds 1600 × 1200 pixels.

- 2 Select an image that you wish to print.



**To edit images**

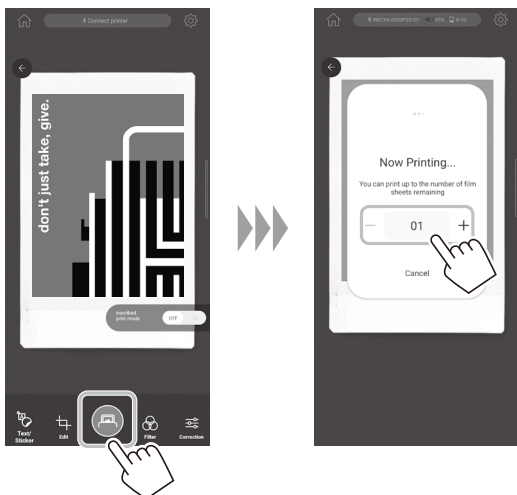
The following image editing options are available before printing.

	Add text or stickers to images.
	Crop or rotate your images.
	Applies a filter to images.
	Adjusts the brightness of images.

### 3 Tap or swipe up on the screen.

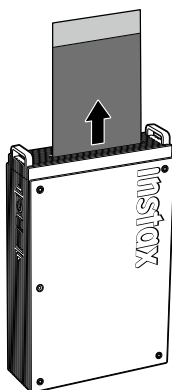
The printer will start printing.

You can also select the number of copies to print during the image transfer sequence.



### 4 Once the film has ejected (the printer stops making a sound), hold the edge of the film and remove from the printer.

You can view the number of prints remaining in the App.



## Collecting Images in the App and Printing

You can add photos stored on your smartphone or images saved on boards with the Pinterest App to the instax mini Link™ App and view them as a collection. You can select the images you want to print by sorting the added images or using the simulation to imagine how they will be used after printing.



For more information on using "Pinterest", visit the instax mini Link+™ website;

[https://instax.com/mini\\_link\\_plus/](https://instax.com/mini_link_plus/)



## Printing Images in the Collection

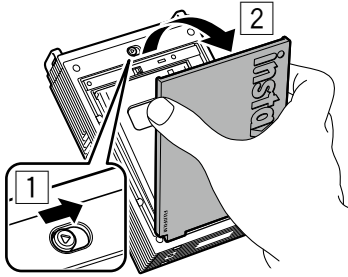
To print an image displayed on the TOP screen, tap the image to go to the print screen. You can also print multiple images in succession (Multiple Print) or decorate images (Simulation).

## Unloading the instax™ mini Film Cartridge

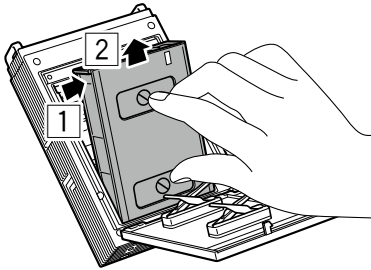
**Caution:**

Do not open the film door until you have used up all of the film; otherwise, the rest of the film is exposed and turns white. The film can no longer be used.

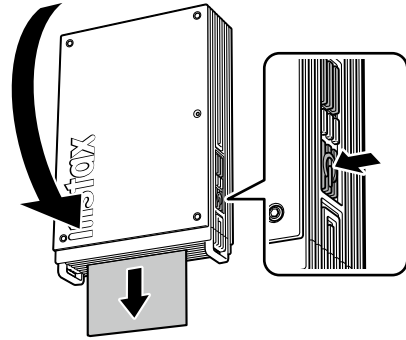
- 1 Slide & hold the film door lock in place, then open the film door.



- 2 Grasp the rectangular holes on the film cartridge and remove the empty film cartridge.



## Reprinting an Image



The last image printed can be reprinted by turning the printer upside down so the ejection slot is facing downwards and then pressing the Power button.

**Note**

If you turn off the printer, you will not be able to access the last printed image using this function. Instead, you can reprint using the dedicated App.

## Controlling the App using the orientation of the Printer and Power Button

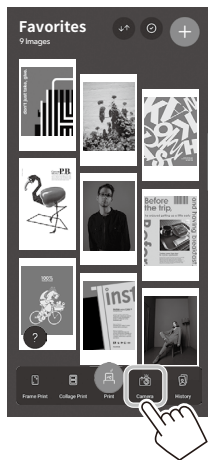
When the printer is connected to the App on your Smartphone or tablet, you can control the App by tilting the printer. For details, refer to the FAQ of the instax mini Link™ App.

### Note

Make sure that [Enable App Operation] is activated in the instax mini Link™ App. When it is inactive, this function cannot be used.

## Controlling the Zoom and Shutter release with the in-App "instax Camera" mode

### 1 Tap [Camera].

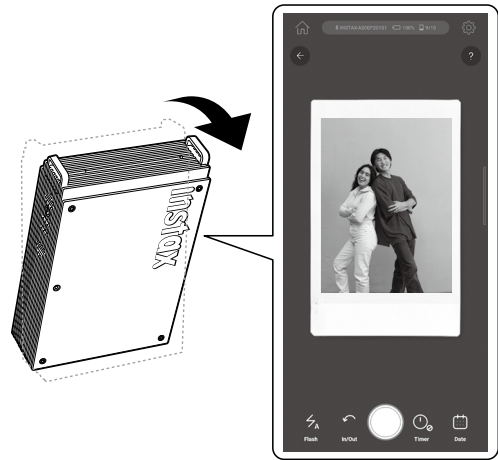


### 2 Tap [instax Camera] to enter the instax Camera mode.



### 3 Control the App from the printer.

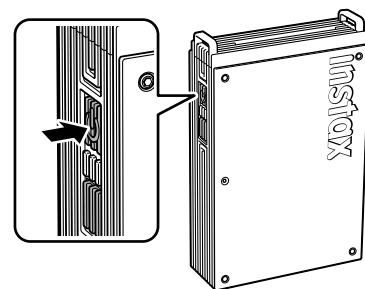
- Tilt the printer forward to zoom in.



- Tilt the printer backward to zoom out.



- Press the Power button to take a photo.



## Important Notice for instax AiR Studio™

instax AiR Studio™ is not fully compatible with certain Smartphone models, and it may have main subject detection limitations. Check the following website for supported devices:

### iOS

Use a compatible Smartphone with iOS 16 or later installed.



URL: <https://support.apple.com/103267>

### Android OS

Use a Smartphone that supports the Depth API.



URL: <https://developers.google.com/ar/devices/>

Scan the QR code below or visit the below website to see the latest, complete list of compatible Smartphone models and for details of detection limitations.



URL: [https://instax.com/mini\\_link\\_3/airstudio/](https://instax.com/mini_link_3/airstudio/)

## Notes on Disposing of the Printer

**A lithium-ion battery inside the printer is used for this printer.** When you dispose of the printer, follow your local regulations and dispose of it properly.



Disposal of Electrical and Electronic Equipment in Private Households  
Disposal of used Electrical & Electronic Equipment (Applicable in the European Union and other European countries with separate collection systems)

This symbol on the product, in the manual and in the warranty, and/or on its packaging indicates that this product should not be treated as household waste. Instead it should be taken to an appropriate collection point for the recycling of electrical and electronic equipment.

By ensuring this product is disposed of correctly, you will help prevent potential negative consequences to the environment and human health, which could otherwise be caused by inappropriate waste handling of this product.

The recycling of materials will help to conserve natural resources. For more detailed information about recycling this product, please contact your local city office, your household waste disposal service or the shop where you purchased the product.

In countries outside of the EU: If you wish to discard this product, please contact your local authorities and ask for the correct way to dispose.



This symbol on the batteries or accumulators indicates that those batteries should not be treated as household waste.

**For customers in Turkey:**

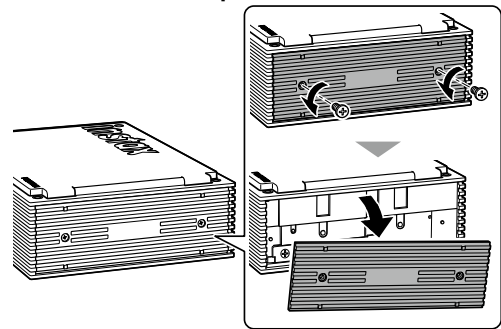
EEE Complies with Directive.

## When Disposing of the Battery

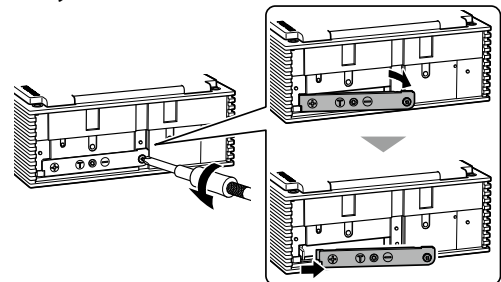
The battery can be removed for disposal by removing the printer's bottom cover and battery cover. When disposing of the printer, remove the battery and dispose of the battery according to the instructions of your local waste disposal and recycling authorities. To replace the battery\*, see page 16.

\*Europe only (in accordance with EU Battery Regulation (EU) 2023/1542)

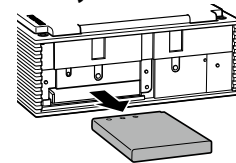
- 1 Use a screwdriver (sold separately) to remove the bottom cover of the printer.



- 2 Using a screwdriver (sold separately), remove the battery cover.



- 3 Take out the battery.



## Installing a Battery

The battery can be replaced with the official FUJIFILM NP-70S lithium-ion battery (sold separately).

### ATTENTION

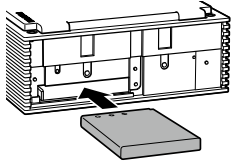
The below battery installation instructions are only for European region.

When replacing the battery, please only use the official NP-70S battery.

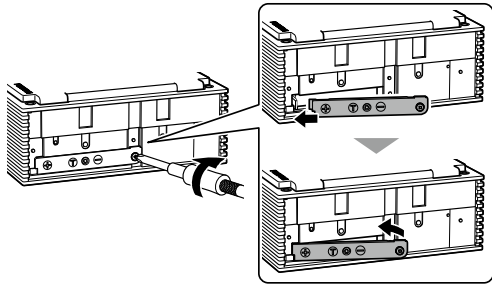
If you have any questions about replacing the battery, contact the FUJIFILM sales company in your region.

If you use the recommended NP-70S battery, the warranty for the printer will be valid. However, the warranty may be void if you use a non-official battery.

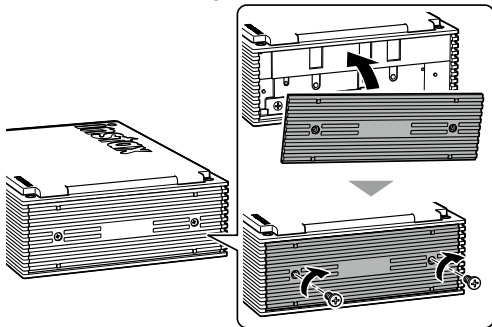
- 1 Install the NP-70S battery (sold separately) in the printer.



- 2 Using a screwdriver (sold separately), install the battery cover.



- 3 Use a screwdriver (sold separately) to attach the bottom cover of the printer.



## Specifications

Recording method	3-color exposure with OLED
Film used	FUJIFILM instax™ mini Instant Film (sold separately)
Image size	62 mm × 46 mm
Exposure pixel count	800 × 600 dots (1600 × 600 dots when printed using Design Print mode)
Exposure resolution	12.5 dots/mm (318 dpi, 80 μm dot pitch) 25 dots/mm × 12.5 dots/mm when printed using Design Print mode (635 × 318 dpi, 40 × 80 μm dot pitch)
Exposure gradation	RGB gradation of 256 colors
Interface	Bluetooth Ver. 5.1
Printable image format	JPEG, PNG, HEIF, DNG
Printing time	After the reception of image data is complete, it takes approximately 15 seconds from writing to film ejection. * An additional second is added when printing in Design Print mode.
Possible number of printed images	Approximately 100 (from full charge; number of prints depends on the usage conditions.)
Power supply	Lithium-ion battery (internal type)
Charging time	Approximately 1.5 to 2.0 hours (depending upon environment temperature at time of charging)
Power consumption	When printing: Approximately 3 W Power Off: Approximately 0.0 W (0.6 mW)
Auto power off function	5 minutes / Off * Deactivating the auto power off function will increase the energy consumption of the product.
Operating environment	Temperature: +5°C to +40°C Humidity: 20% to 80% (no condensation)
Dimensions	86.7 mm × 33.4 mm × 128.0 mm (excluding projecting parts)
Weight	240 g (excluding film cartridge)
Supplied accessory	USB Type-C cable (FZ00013220, Length: 30 cm)

\*The above specifications are subject to change for performance improvement.

## Troubleshooting

Please check the following items before considering the problem to be a malfunction. If the problem persists even after taking action, please contact the FUJIFILM service center for repair in your country or visit the website below:

FUJIFILM website: <https://www.fujifilm.com/>

**If the following problem occurs...**

Problem	Possible causes and solutions
I cannot turn the printer on.	<ul style="list-style-type: none"> <li>The battery may not be charged. Please charge the printer.</li> <li>You did not press the Power button for long enough. Press and hold the Power button for approximately 1 second.</li> </ul>
The battery loses its charge quickly.	If you use the printer in a very cold environment, the battery will drain quickly. Please keep the printer warm before printing.
The printer shuts down during use.	The battery level may be low. Please charge the printer.
Charging does not start.	Make sure that the USB power adapter plug is properly connected to the power outlet.
The printer takes too long to charge.	At low temperatures, charging may take longer.
Charging stops during charging.	Charge the battery in a temperature range of +5°C to +40°C. If you cannot charge the printer in this range, contact your FUJIFILM dealer or support center.
The printer does not function normally.	<ul style="list-style-type: none"> <li>There may be a temporary malfunction. Please press the Reset button. If the printer still does not function normally, please contact our repair service center for repair.</li> <li>The battery may not be charged. Please charge the printer.</li> </ul>
The film cartridge does not load or does not load correctly.	<ul style="list-style-type: none"> <li>Please use FUJIFILM instax™ mini Instant Film (other films cannot be used).</li> <li>Align the yellow mark on the film cartridge with the yellow alignment marker on the printer body, once aligned load the film into the printer.</li> </ul>
The film does not eject.	<ul style="list-style-type: none"> <li>The film may be misaligned due to an impact such as vibration or dropping. Please load a new film cartridge.</li> <li>If the film is jammed, turn the printer off and turn it on again. If the problem persists, remove the jammed film and then load a new film cartridge.</li> </ul>
Some or all of the finished prints are white.	Do not open the film door until the film has been used up. If the film door is opened with film remaining, the film will be exposed and become white.

Problem	Possible causes and solutions
The print is uneven.	<ul style="list-style-type: none"> <li>Do not shake, bend, fold or hold the print immediately after it is printed.</li> <li>Do not obstruct the film ejection slot.</li> </ul>
I cannot reprint images.	The last stored image that has been printed is deleted when the printer is turned off.
The function that is used by tilting the printer does not work.	Confirm that [Enable App Operation] in the instax mini Link™ App is activated.

## IMPORTANT SAFETY NOTICE

This product has been designed to ensure the safety of the user when handled correctly, and in accordance with the User's Guide and the instructions provided. It is important that both the product and the instax™ mini film are handled properly and used only to print photos as instructed in the User's Guide and in the instax™ mini film instructions.

### WARNING

This symbol indicates danger, which could result in injury or death. Please follow these instructions.

- ⚠ If one of the following cases occurs, immediately unplug the supplied USB Type-C cable, turn the printer off and refrain from using the printer. Contact the FUJIFILM service center; otherwise heat generation or fire may occur:
  - The printer becomes hot, emits smoke, emits a burnt smell or is functioning abnormally.
  - The printer is dropped into water or any foreign objects enter the printer.
- ⚠ This device contains a battery. Do not subject to heat, throw it into an open fire, drop or subject to impact. Doing so could cause the printer to explode.
- ⚠ Never get this product wet or handle it with wet hands. Doing so may result in an electric shock.
- ⚠ Keep out of the reach of small children. This product could cause injury in the hands of a child.

### CAUTION

This indicates a matter that may lead to injury or physical damage if ignored or incorrectly handled.

- ⚠ Never attempt to take this product apart. You may be injured.
- ⚠ If the printer is not functioning correctly, to avoid injury do not attempt to repair yourself.
- ⚠ If this product is dropped or damaged so that the internals are visible, do not touch it. Contact your FUJIFILM dealer.
- ⚠ Do not touch any parts within the inside of the film door. This may cause injury.
- ⚠ Promptly unplug the USB Type-C cable once battery is fully charged.
- ⚠ Do not cover or wrap the printer or the AC power adapter in a cloth or blanket. This can cause heat to build up and distort the casing or cause a fire.



The "CE" mark certifies that this product satisfies the requirements of the EU (European Union) regarding safety, public health, environment and consumer protection. ("CE" is the abbreviation of Conformité Européenne.)

Hereby, FUJIFILM declares that the radio equipment type "FI046W" is in compliance with Directive 2014/53/EU.

For more information, access the website below.

[https://instax.com/support/declaration/#smartphone\\_printers](https://instax.com/support/declaration/#smartphone_printers)



The "UKCA" mark certifies that this product satisfies the requirements of Great Britain (England, Scotland, Wales) regarding safety, public health, environment and consumer protection.

\*UKCA: UK Conformity Assessed.

## Simple Printer Care

### ■ Handling the printer and battery

- CAUTION - Do not expose to excessive heat such as sunshine, fire or the like. This can result in an explosion or the leakage of flammable liquid or gas during use, storage, transportation or disposal.
- CAUTION - Do not dispose of a battery into fire or a hot oven. Do not mechanically crush or cut the battery. This can result in an explosion.
- CAUTION - Do not subject to extremely low air pressure at high altitude, this may result in an explosion or the leakage of flammable liquid or gas.

### ■ Printer Care

1. Do not open the film door until you have used up all of the film; otherwise, the rest of the film is exposed and turns white. The film can no longer be used.
2. Your printer is a fragile object. Do not expose it to water, sand or gritty materials.
3. Do not use solvent such as thinner or alcohol to remove dirt.
4. Keep the film chamber and printer interior clean to avoid damaging the film.
5. Do not leave your printer in direct sunlight or hot places such as the inside of a car. Do not leave the printer in damp places for prolonged periods.
6. Moth repellent gas such as naphthalene may affect your printer and prints. Take care to keep your printer and prints in a safe, dry place.
7. Note that the temperature range within which your printer can be used is +5°C to +40°C.
8. Take great care to ensure that printed materials do not violate copyright, image rights, privacy or other personal rights and do not offend public decency. Actions that violate the rights of others, are contrary to public decency or constitute a nuisance may be punishable by law or otherwise legally actionable.
9. This printer is designed for domestic/personal use. It is not suitable for commercial photography and other applications where a large number of prints are needed.

### ■ Charging the Battery

- The battery has not been fully charged during manufacture. Please charge the battery fully before first use.
- Charge the battery using the supplied USB Type-C cable. Charging times will increase at ambient temperatures below +10°C or above +35°C.
- Do not attempt to charge the battery at temperatures above +40°C or at temperatures below +5°C as the battery will not charge.

### ■ Battery Life

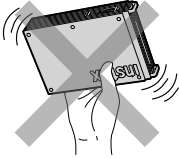
At normal temperatures, the battery can be recharged about 300 times. A noticeable decrease in the length of time the battery will hold a charge indicates that it has reached the end of its service life.

### ■ Caution when handling the battery

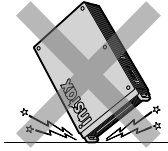
The battery and printer body may become warm to the touch after extended use. This is normal.

### ■ Certification marks acquired by the printer are located inside the film chamber.

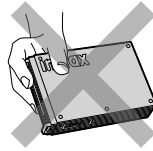
### ■ Cautions for when printing film:



Do not shake the printer while printing.



Do not drop the printer while printing.



Do not cover the film ejection slot while printing.

### ■ instax™ mini Film and Print Care

See FUJIFILM instax™ Instant Film instax™ mini for film use instructions. Follow all instructions for safe and proper use.

1. Keep the film in a cool place. Do not leave the film in a place where the temperature is extremely high (e.g. in a closed car) for many hours.
2. Do not puncture, tear, or cut the instax™ mini film. If film becomes damaged, do not use.
3. When you load a film cartridge, use the film as soon as possible.
4. If the film has been kept in a place where the temperature is extremely high or low, bring it to room temperature before starting to print pictures.
5. Be sure to use the film before the expiration or "Use Before" date.
6. Avoid airport checked luggage scanning and other strong X-ray exposure. The effect of fogging, etc. may appear on unused film. We recommend that you carry the printer and/or the film onto the aircraft as carry-on luggage. (Check with each airport for more information.)
7. Avoid strong light, and keep the developed prints in a cool and dry place.
8. Do not puncture or cut the film as it contains a small amount of caustic paste (high alkaline). Never let children or animals put the film into their mouth. Also ensure that the paste does not come into contact with skin or clothes.
9. Should the paste inside the film come into contact with skin or clothes, immediately wash off with plenty of water. If the paste comes into contact with the eyes or mouth, immediately wash the area with plenty of water and contact a doctor. Note that the alkaline inside the film remains active for about 10 minutes after the picture has been printed.

### ■ Caution: Handling the Film and Photo Prints

For full details, refer to the instructions and warnings on the packaging of the FUJIFILM Instant Film instax™ mini.



### Bluetooth® Devices: Cautions

**IMPORTANT:** Read the following notices before using the product's built-in Bluetooth transmitter.

#### ■ Use only as part of a Bluetooth network.

FUJIFILM does not accept liability for damages resulting from unauthorized use. Do not use in applications requiring a high degree of reliability, for example in medical devices or other systems that may directly or indirectly impact human life. When using the device in computer and other systems that demand a greater degree of reliability than Bluetooth networks, be sure to take all necessary precautions to ensure safety and prevent malfunction.

#### ■ Use only in the country in which the device was purchased.

This device conforms to regulations governing Bluetooth devices in the country in which it was purchased. Observe all location regulations when using the device. FUJIFILM does not accept liability for problems arising from use in other jurisdictions.

#### ■ Wireless data (images) may be intercepted by third parties.

The security of data transmitted over wireless networks is not guaranteed.

#### ■ Do not use the device in locations subject to magnetic fields, static electricity, or radio interference.

Do not use the transmitter in the vicinity of microwave ovens or in other locations subject to magnetic fields, static electricity, or radio interference that may prevent reception of wireless signals. Mutual interference may occur when the transmitter is used in the vicinity of other wireless devices operating in the 2.4 GHz band.

■ **The Bluetooth transmitter operates in the 2.4 GHz band. The maximum radio-frequency power is 9.10 mW.**

■ **This device operates on the same frequency as commercial, educational, and medical devices and wireless transmitters.**

It also operates on the same frequency as licensed transmitters and special unlicensed low-voltage transmitters used in radio-frequency identification tracking systems for assembly lines and in other similar applications.

■ **To prevent interference with the above devices, observe the following precautions.**

Confirm that the radio-frequency identification transmitter is not in operation before using this device. If you notice that this device causes interference in low-voltage radio-frequency identification tracing systems, contact a FUJIFILM representative.

■ **The following may be punishable by law:**

- Disassembly or modification of this device.
- Removal of device certification labels.

■ **Trademark Information**

The Bluetooth® word mark and logos are registered trademarks owned by the Bluetooth SIG, Inc., and any use of such marks by FUJIFILM is under license.

**Information for traceability in Europe**

**Manufacturer: FUJIFILM Corporation**

7-3, Akasaka 9-Chome, Minato-ku, Tokyo  
Japan

**Authorized representative in Europe:**

**FUJIFILM Europe GmbH**

Balcke-Duerr-Allee 6, 40882 Ratingen  
Germany

**EU Importer: FUJIFILM Europe B.V.**

Oudenstaart 1, 5047 TK Tilburg  
The Netherlands

product.safety.eu@fujifilm.com

**UK Importer: FUJIFILM UK Ltd.**

Fujifilm House, Whitbread Way,  
Bedford, Bedfordshire, MK42 0ZE  
UK

**Independent JPEG Group (IJG) Licenses**

This software is based in part on the work of the Independent JPEG Group.

*FUJIFILM, instax, instax mini Link+, and instax AiR Studio* are registered trademarks or trademarks of FUJIFILM Corporation and its affiliates.

© 2026 FUJIFILM Corporation. All rights reserved.

If you have any inquiries about this product, please contact a FUJIFILM authorized dealer, or access the website below:  
<https://www.fujifilm.com/>

**FUJIFILM**

**FUJIFILM Corporation**

7-3, AKASAKA 9-CHOME, MINATO-KU, TOKYO 107-0052, JAPAN