

**FUJIFILM**

# **instax mini Link+™**

Smartphone Printer

**User's Guide (Full version)**



**Scan the QR code below to download the instax mini Link™ App**

Please install the free instax mini Link™ App on your Smartphone before using the printer.

After downloading is complete, you have to pair your Smartphone to the printer.

- If you are using an Android OS Smartphone, please search for the instax mini Link™ App in the Google Play Store and install it.  
\* Requirements for Android OS Smartphones: Android Ver. 10.0 or higher with Google Play Store installed
- If you are using an iOS Smartphone, please search for the instax mini Link™ App in the App Store and install it.  
\* Requirements for iOS Smartphones: iOS Ver. 16.0 or higher
- Depending on your Smartphone model, you may not be able to use the instax mini Link™ App even if you have installed it and your Smartphone meets the above requirements.

Access the instax mini Link™ App download site for the latest information on system requirements.

Scan to download the instax mini Link™ App



iOS



Android OS

The text QR code itself is a registered trademark and wordmark of Denso Wave Incorporated.

**Note on handling the instax™ mini instant film cartridge (sold separately)**

Do not open the Film Door until all 10 film sheets of the instax™ mini instant film cartridge (sold separately) have been used. Opening the Film Door will expose any remaining, unused film sheets, rendering the remainder of the film cartridge unusable.

**Table of Contents**

Scan the QR code below to download the instax mini Link™ App..... 2

Note on handling the instax™ mini instant film cartridge (sold separately)..... 2

Before Use ..... 3

Attaching the Strap..... 3

Part Names..... 4

Charging the Battery ..... 5  
    LED charging status indicator ..... 5

Checking Level of Battery Charge ..... 5

Loading the instax™ mini Instant Film Cartridge (sold separately) ..... 6

Turning the Printer on/off..... 7

Checking the Printer Status with the LED..... 7

Pairing your Smartphone and the instax mini Link+™ Printer; Printing ..... 7  
    When Pairing for the First Time ..... 7  
    When the Printer and Smartphone are Already Paired ..... 10

Print an Image from your Smartphone’s Camera Roll ..... 10

Collecting Images in the instax mini Link™ App and Printing..... 11

Printing Images in the Collection ..... 11

Unloading the instax™ mini Instant Film Cartridge (sold separately) ..... 12

Reprinting an Image ..... 12

Controlling the instax mini Link™ App with the Angle of the Printer and the Power Button..... 13  
    Controlling Zoom and Shutter When Using the instax™ Camera Feature on the instax mini Link™ App..... 13

Important Notice for instax AiR Studio™ App Feature ..... 14

When Disposing of the Battery..... 14  
    Removing the Battery at End of Life ..... 14

Specifications ..... 15

Troubleshooting ..... 15

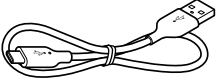
IMPORTANT SAFETY NOTICE..... 16  
    Printer Care ..... 17  
    Bluetooth® Devices: Cautions..... 18

## Before Use

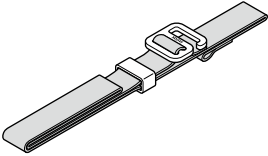
Before using the printer, check to make sure you have the following included accessories:

### Supplied Accessories

- USB Type-C cable (FZ00013220) (1)



- Strap (1)



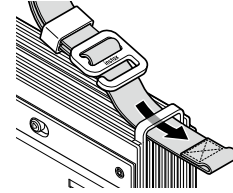
- ❗ The printer's battery has not been fully charged at the factory. Be sure to fully charge the battery before using the printer. The free instax mini Link™ App will need to be downloaded (see page 2) and paired (see page 7) with your Smartphone prior to initial use.
- ❗ The included USB Type-C cable should only be used for charging the printer's battery.

Read 'IMPORTANT SAFETY NOTICE' (Page 16) for safety information.

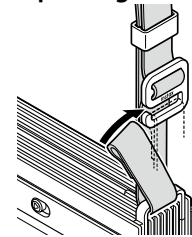
## Attaching the Strap

Attach the Strap to the Strap Eyelet on one side of the printer.

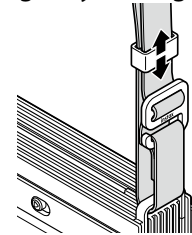
- 1** Thread the end of the Strap through the Strap Eyelet.



- 2** Thread the loop at the end of the Strap through the buckle of the Strap fitting and secure the Strap.



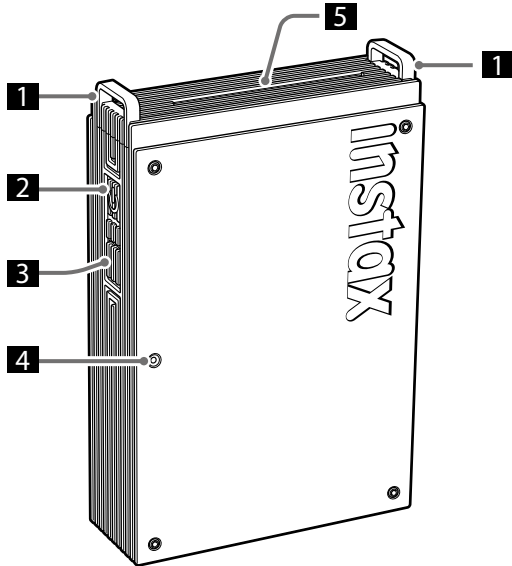
- 3** Adjust Strap length by moving the slider.



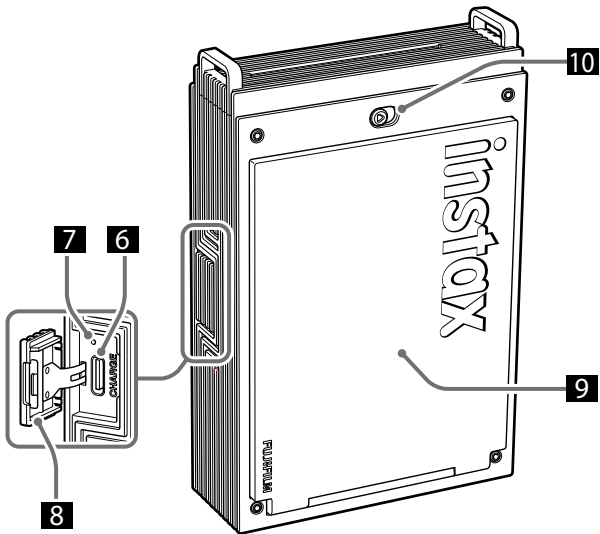
- Use the Strap over your wrist, not around your neck.
- Make sure the Strap does not hang over the Film Ejection Slot.

## Part Names

Front



Rear



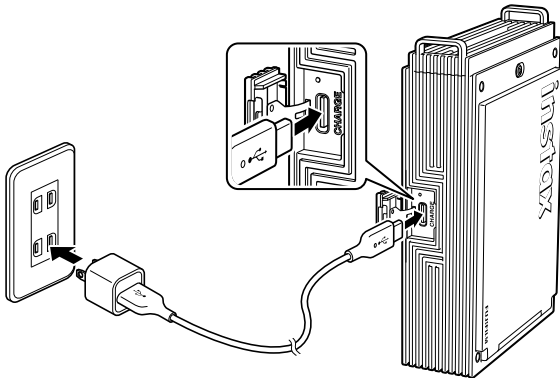
- 1 Strap Eyelet
- 2 Power Button
- 3 Function Button
- 4 LED<sup>\*1</sup>
- 5 Film Ejection Slot
- 6 USB Type C port
- 7 Reset Button<sup>\*2</sup>
- 8 USB Type C Port Cover
- 9 Film Door<sup>\*3</sup>
- 10 Film Door Lock

<sup>\*1</sup> For details on LED indication status, see pages 5 to 7.

<sup>\*2</sup> If the printer does not work properly, press the Reset Button to reset the printer.

<sup>\*3</sup> Printer uses instax™ mini instant film only (film sold separately).

## Charging the Battery



Charge the printer using the supplied USB Type-C cable in a USB outlet, or attach the USB Type-C cable to a USB AC adapter (adapter sold separately) and charge in an electric power outlet. A USB AC adapter is not included with the instax mini Link+™ printer.

- You can print an image while charging is in progress.
- Charging time is approximately 1.5 to 2 hours.

### LED charging status indicator

When the printer is turned on

LED	Charging status
White LED (not flashing)	Not charging
Green LED (not flashing)	Charging complete
Green LED (flashing)	Charging

When the printer is turned off

LED	Charging status
LED turned off	Not charging / charging complete
Green LED (flashing)	Charging

### Charging from a PC:

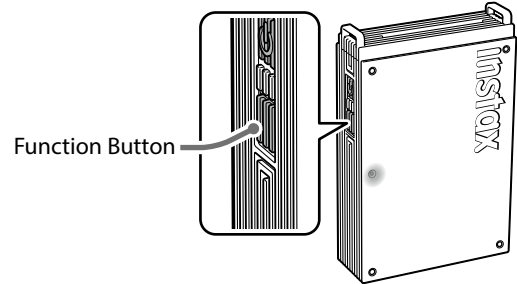
- Connect the printer and PC directly. Do not connect via a USB hub or keyboard.
- If the PC goes into sleep mode while charging, charging is discontinued. To continue charging, exit sleep mode and then reconnect the USB Type-C cable.
- The battery may not be able to charge depending on the specifications, settings, or conditions of the PC.

### Notes

- The battery has not been fully charged at the factory. Be sure to charge the battery before using the printer.
- For important information about the battery, see "Printer Care". (p.17)

## Checking Level of Battery Charge

Pressing the Function Button while the printer is turned on can check the battery level.



LED	Battery level
Flashes green once	Low battery level
Flashes green twice	Middle battery level
Flashing green three times	High battery level

Check the charging status with your Smartphone when connected to the free instax mini Link™ App (Smartphone download required).

## Loading the instax™ mini Instant Film Cartridge (sold separately)

### NOTE

Do not open the Film Door until all 10 film sheets of the instax™ mini instant film cartridge (sold separately) have been used. Opening the Film Door will expose any remaining, unused film sheets, rendering the remainder of the film cartridge unusable.

- When you load the film cartridge, never press the two rectangular holes on the back of the film cartridge.
- Never use a film cartridge beyond its shelf life; otherwise, it may damage the printer.

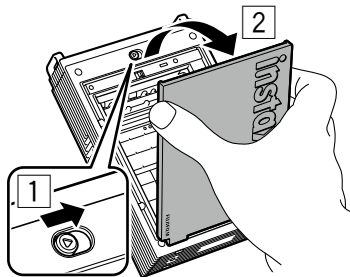
Use FUJIFILM instax™ mini instant film (sold separately) only. The instax™ SQUARE or instax™ WIDE Instant Film Cartridges are not compatible with this printer.

### Notes on the Film Cartridge

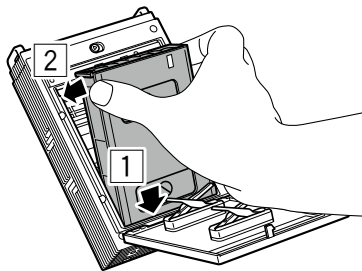
- Each FUJIFILM instax™ mini instant film cartridge contains one black film protective cover and 10 film sheets.
- Do not remove the film cartridge from its inner bag until you are ready to load it into the printer.
- The black film protective cover is ejected automatically when the Film Door is closed.

For details, refer to the instructions and warnings on the package of FUJIFILM instax™ mini instant film (sold separately).

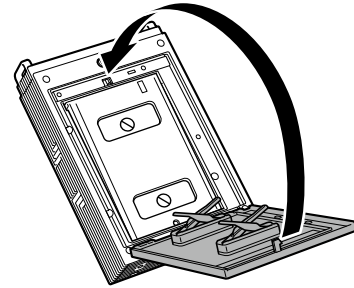
- 1** Slide & hold the Film Door Lock in place, then open the Film Door.



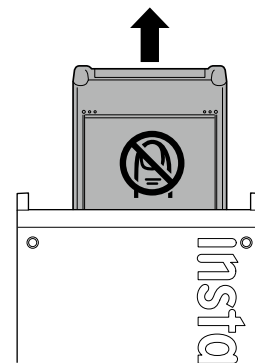
- 2** Insert an instax™ mini instant film cartridge by aligning the yellow marks on the film cartridge and the printer body.



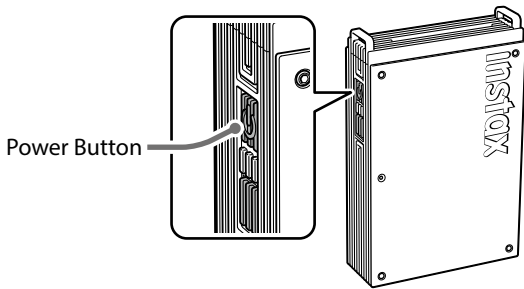
- 3** Close the Film Door.



- 4** Remove the black film protective cover that is automatically ejected from the printer.



## Turning the Printer on/off



Press and hold the Power Button for approximately 1 second to turn the printer on or off.  
 The LED lights up when the printer is turned on.  
 The printer turns off automatically when not in use for a certain period of time (Auto turn-off function can be adjusted in the instax mini Link™ App).

## Checking the Printer Status with the LED

The LED light indicates the printer status.

Indication	Status
Blue LED (flashing)	Firmware is being updated
White LED (pulsing)	Reprinting
Yellow LED (static - the printer will turn off in 3-seconds)	<ul style="list-style-type: none"> <li>• Cannot be charged</li> <li>• Low battery</li> </ul> *If this continues even after charging, there may be a malfunction. In such cases, contact the applicable Fujifilm Customer Service/Repair Center.
Yellow LED (flashing)	<ul style="list-style-type: none"> <li>• Film ejection error occurred. Please check to make sure the Film Ejection Slot is not jammed and the Film Door is securely closed.</li> </ul> *If this continues to occur, please contact the applicable Fujifilm Customer Service/Repair Center.

## Pairing your Smartphone and the instax mini Link+™ Printer; Printing

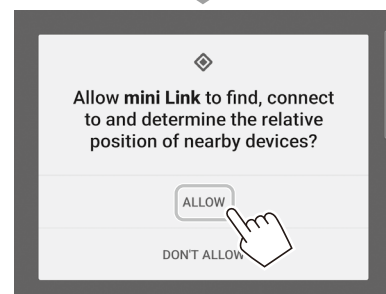
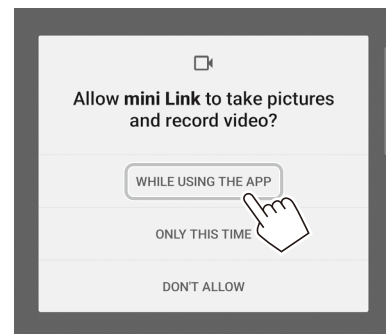
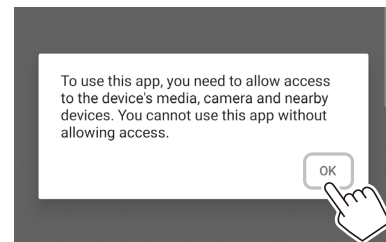
With the functions of the instax mini Link™ App, you can edit your favorite Smartphone images before printing by adding text, applying filters, and much more! Check out the following site: [https://instax.com/mini\\_link\\_plus/](https://instax.com/mini_link_plus/)

### When Pairing for the First Time

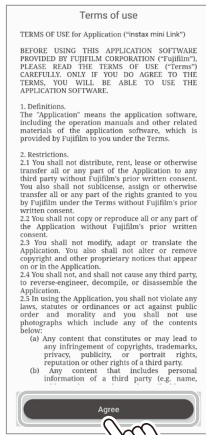
- 1 Start the downloaded instax mini Link™ App.
  - If you have not already done so, download the instax mini Link™ App (see page 2).



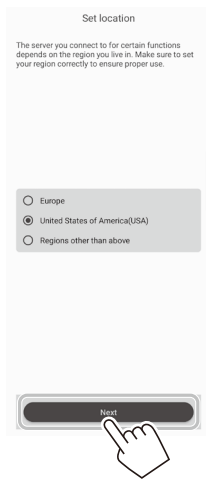
- 2 Click through the below pop-up windows to set up the printer.



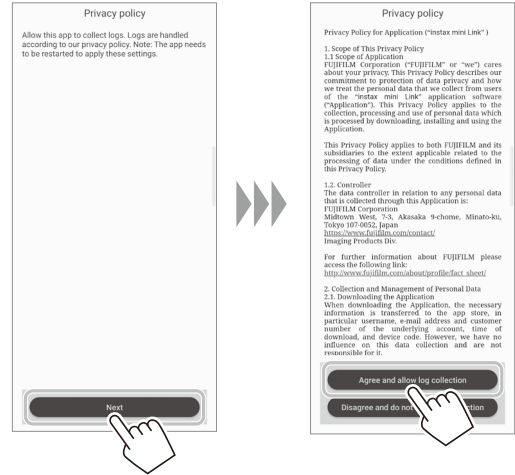
- 3 Read the Terms of Use, and tap the [Agree] bar.**  
You must “agree” to the Terms of Use to complete the pairing.



- 4 Select the usage area, and tap [Next].**  
If you are using the printer in USA, select [United States of America (USA)].



- 5 Tap [Next], read the privacy policy, and tap [Agree and allow log collection].**  
You must “Agree and allow log collection” to the Privacy Policy to complete pairing.



- 6 Select [mini Link+] on the Select printer screen, and tap [Next].**



- 7 When the following screen appears, turn the printer on, and then tap [Next] on the screen.**

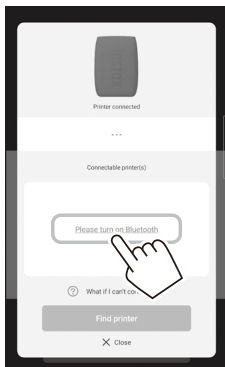


**8** When the screen indicates that the printer is detected, tap [Connect].

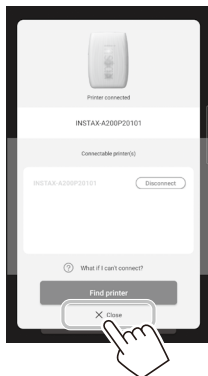
If multiple printers are detected, select the printer you would like to pair from the list. Locate the printer's identifier (device name) on the bottom of the printer. Make sure the printer is on during this step. If not, turn the printer on by pressing and holding the Power Button for 1 second.



**Note**  
If your Bluetooth® settings are switched off, tap [Please turn on Bluetooth] to turn the Bluetooth® settings on.



**9** When your printer is paired, tap [Close].

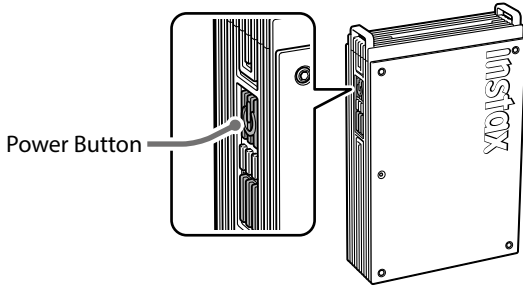


**10** Quick instructions are displayed. Read the instructions and tap [Let's Play!].



## When the Printer and Smartphone are Already Paired

- 1 Press and hold the Power Button for approximately 1 second to turn the printer on.  
The LED lights up.

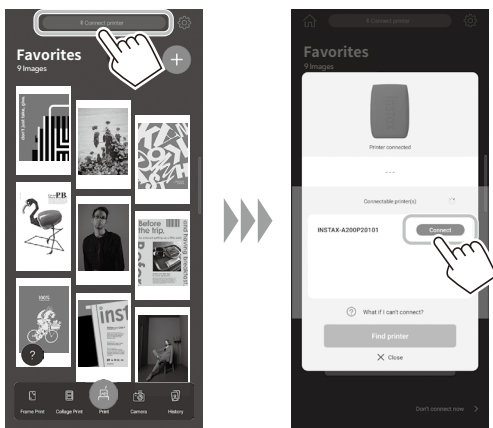


- 2 Start the downloaded instax mini Link™ App.



- 3 Tap [Connect printer] located at the top of the screen.

Select the printer you want to connect from the Connectable printer(s) list, and tap [Connect].



## Print an Image from your Smartphone's Camera Roll

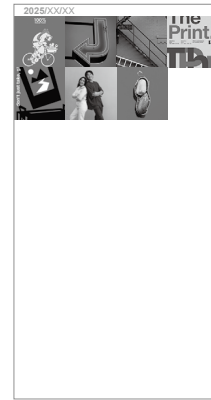
- 1 Tap , then tap [Simple Print] or [Design Print].




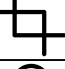
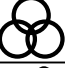

### Notes

You can use the [Design Print] option when the image size exceeds 1600 × 1200 pixels.

- 2 Select an image from your Smartphone's camera roll that you wish to print.

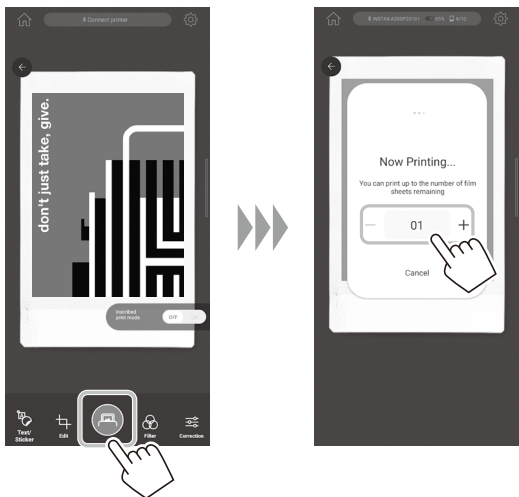


To edit your image, click on the below editing options on the bottom of the screen before printing.

	Enters text or attaches a sticker to images.
	Zooms up/down or rotates images.
	Applies a filter on images.
	Adjusts the brightness of images.

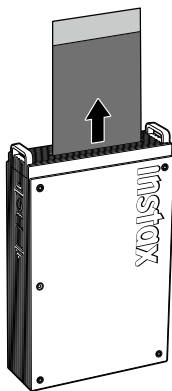
**3** Tap  or swipe the image up on the screen to print your image.

After a slight transmission delay, the printer starts printing. You can also select the number of images to print during image transfer.



**4** When the film has been fully ejected (the printer stops making a sound), grasp the edge of the film, then take it out.

Confirm the number of images remaining in your instax™ mini instant film cartridge on the instax mini Link™ App screen.



### Collecting Images in the instax mini Link™ App and Printing

In the instax mini Link™ App, you can import photos stored on your Smartphone's camera roll or images saved on Pinterest boards from the Pinterest App (separate download required) and view them as a collection. You can select the images you want to print by sorting the added images or using the simulation to imagine how they will be used after printing.



For more information on using the Pinterest App, visit [https://instax.com/mini\\_link\\_plus/](https://instax.com/mini_link_plus/) or scan the QR code below:



### Printing Images in the Collection

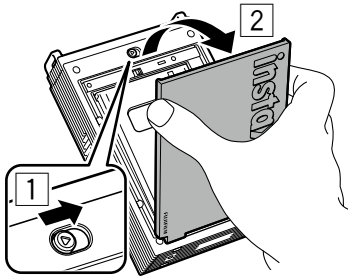
To print an image displayed on the screen, tap the image to go to the Print Screen. You can also print multiple images in succession (Multiple Print) or visualize your instax™ photo display before printing it (Simulation).

## Unloading the instax™ mini Instant Film Cartridge (sold separately)

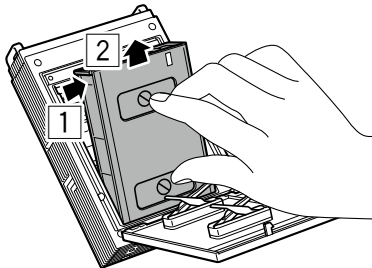
### ATTENTION

Do not open the Film Door until all 10 film sheets of the instax™ mini instant film cartridge (sold separately) have been used. Opening the Film Door will expose any remaining, unused film sheets, rendering the remainder of the film cartridge unusable.

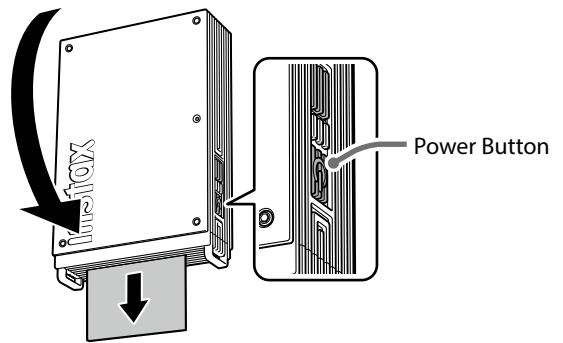
- 1 Slide & hold the Film Door Lock in place, then open the Film Door.



- 2 Grasp the rectangular holes on the film cartridge, then pull film cartridge out from the printer. Properly dispose of used film cartridge.



## Reprinting an Image



The last image printed can be reprinted by turning the printer over with the Film Ejection Slot facing downwards and pressing the Power Button.

### Note

When you turn off the printer, you will not be able to reprint the image you last printed after you turn the printer back on. However, you will be able to print the image from the instax mini Link™ App.

## Controlling the instax mini Link™ App with the Angle of the Printer and the Power Button

When this printer is linked with the instax mini Link™ App on your Smartphone or tablet, you can control the instax mini Link™ App by tilting the printer using the instax mini Link™ App linked function.

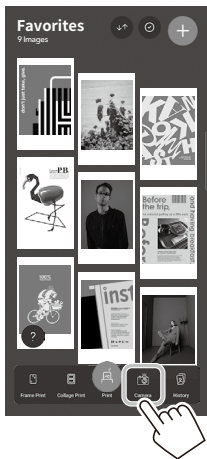
For details, refer to the FAQ of the instax mini Link™ App.

### Note

Make sure that [Enable App Operation] is activated on the instax mini Link™ App. When it is inactivated, this function is unavailable.

## Controlling Zoom and Shutter When Using the instax™ Camera Feature on the instax mini Link™ App

### 1 Tap [Camera].

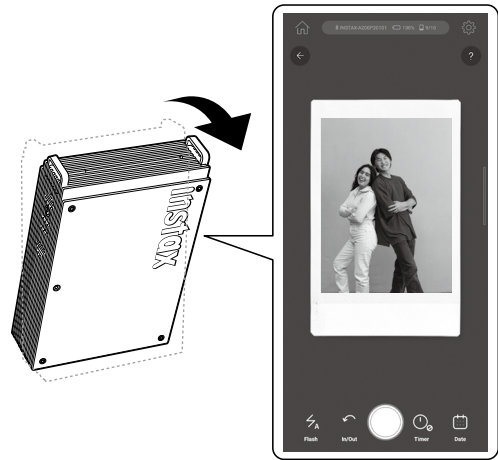


### 2 Tap [instax Camera] to enter the instax™ Camera mode.



### 3 Control the instax mini Link™ App from the printer.

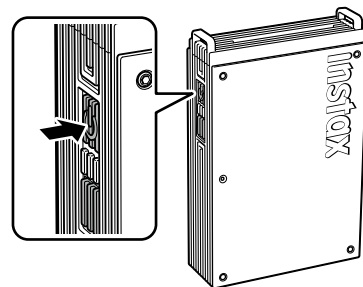
- Tilt the printer forward to zoom in.



- Tilt the printer backward to zoom out.



- Press the Power Button to take a photo.



## Important Notice for instax AiR Studio™ App Feature

The instax AiR Studio™ App feature in the instax mini Link™ App is not fully compatible with certain Smartphone models, and it may have main subject detection limitations.

Check the following websites for supported devices (This list may be updated from time to time, as described below):

### iOS

Use a compatible Smartphone with iOS 16 or later installed.



iPhone 16 Pro / iPhone 16 / iPhone 15 Pro / iPhone 15 / iPhone 14 Pro / iPhone 14 / iPhone13 / iPhone SE (3rd generation)

URL: <https://support.apple.com/103267>

### Android OS

Use a Smartphone that supports the Depth API.



Google Pixel 9 Pro / Google Pixel 9 Pro XL / Google Pixel 9 Pro Hold / Google Pixel 8 Pro / Google Pixel 8 / Google Pixel 8a / Google Pixel 7a / Galaxy S24 / Galaxy A55 5G

URL: <https://developers.google.com/ar/devices/>

Scan the QR code here or visit the below website to see the latest, complete list of compatible Smartphone models and for details of detection limitations.



URL: [https://instax.com/mini\\_link\\_3/airstudio/](https://instax.com/mini_link_3/airstudio/)

## When Disposing of the Battery

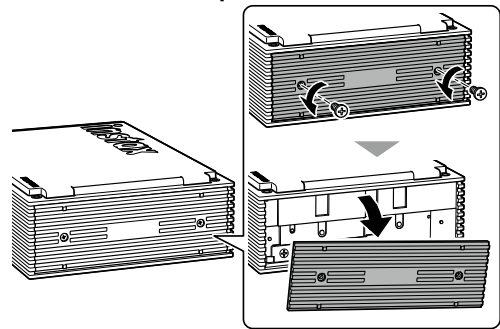
### Removing the Battery at End of Life

Dispose of the battery according to the instructions of your local recycling authority and local government.

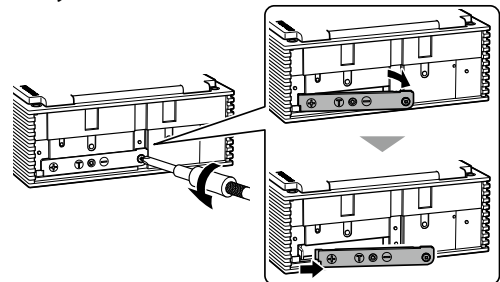
#### ATTENTION

The battery should only be removed at time of product disposal. It is not covered by the product warranty.

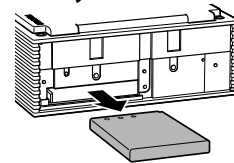
- 1 Use a screwdriver (sold separately) to remove the bottom cover of the printer.



- 2 Using a screwdriver (sold separately), remove the battery cover.



- 3 Take out the battery.



## Specifications

Recording method	3-color exposure with OLED
Film used	FUJIFILM instax™ mini instant film (sold separately)
Image size	2.4 in × 1.8 in / 62 mm × 46 mm
Exposure pixel count	800 × 600 dots (1600 × 600 dots when printed using Design Print mode)
Exposure resolution	12.5 dots/mm (318 dpi, 80 μm dot pitch) 25 dots/mm × 12.5 dots/mm when printed using Design Print mode (635 × 318 dpi, 40 × 80 μm dot pitch)
Exposure gradation	RGB gradation of 256 colors
Interface	Bluetooth® Ver. 5.1
Printable image format	JPEG, PNG, HEIF, DNG
Print transmission time	Approximately 15 seconds for transmission and to start printing. * An additional second is added when printing in Design Print mode.
Possible number of printed images	Approximately 100 (from full charge; number of prints depends on the usage conditions.)
Power supply	Lithium-ion battery (internal type)
Charging time	Approximately 1.5 to 2 hours (depending upon environment temperature at time of charging)
Power consumption	When printing: Approximately 3 W Power Off: Approximately 0.0 W (0.6 mW)
Auto power off function	5 minutes / Off * Deactivating the auto power off function will increase the energy consumption of the product.
Operating environment	Temperature: +41°F to +104°F (+5 °C to +40°C) Humidity: 20% to 80% (no condensation)
Main unit dimensions	3.41 in. × 1.31 in. × 5.04 in. (86.7 mm × 33.4 mm × 128.0 mm) excluding projecting parts
Main unit weight	0.53 lbs (240 g) (excluding film cartridge)
Supplied accessory	USB Type-C cable (FZ00013220) Length: 11.81 in. (30 cm)

\*The above specifications are subject to change for performance improvement.

## Troubleshooting

Please check the following items before considering a problem to be a malfunction. If the problem persists even after taking action, please contact the Fujifilm service center for repair in your country or visit the website below.

FUJIFILM website: <https://www.fujifilm.com/>

**If the following problem occurs...**

Problem	Possible causes and solutions
I cannot turn on the printer.	The battery may not be charged. Please charge the printer. You may not have pressed the Power Button long enough. Press and hold the Power Button for approximately 1 second.
The battery loses its charge quickly.	If you use the printer in a very cold environment, the battery will drain quickly. Move the printer to a warmer environment and allow it to adjust to room temperature before printing.
The printer turned off during use.	The battery level may be low. Please charge the printer.
Charging does not start.	Make sure that the USB power adapter plug is properly connected to the power outlet.
It takes too long to charge.	At low temperatures, charging may take longer.
Charging does not start or prematurely stops.	Charge the battery in a temperature range of 41°F to 104°F (5°C to 40°C). If you cannot charge the printer in this range, contact the applicable Fujifilm Customer Service/Repair Center.
The printer does not work properly.	<ul style="list-style-type: none"> <li>• There may be a temporary malfunction. Please press the Reset Button. If it still does not work properly, please contact our repair service center for repair.</li> <li>• The battery may not be charged. Please charge the printer.</li> </ul>
The film cartridge does not load or does not load smoothly.	Please use FUJIFILM instax™ mini instant film only (instax™ SQUARE or instax™ WIDE instant film are not compatible with this printer). Align the yellow mark on the film cartridge with the printer alignment mark (yellow) and load it.
The photo does not properly eject.	<ul style="list-style-type: none"> <li>• The film cartridge may be misaligned due to shock such as vibration or dropping. Please load a new film cartridge.</li> <li>• If the film cartridge is jammed, turn the printer off and turn it on again. If the problem persists, remove the jammed film and then load a new film cartridge.</li> </ul>
Some or all of the finished prints are white.	Do not open the Film Door until the film is used up. If the Film Door is opened with film remaining, the film may be exposed and the exposed area may become white.

Problem	Possible causes and solutions
The print is uneven.	<ul style="list-style-type: none"> <li>• Do not shake, bend, fold or hold the print immediately after it is printed.</li> <li>• Do not obstruct the Film Ejection Slot.</li> </ul>
I cannot reprint images.	The stored image is deleted when the printer is turned off.
The function that is used by tilting the printer does not work.	Confirm that [Enable App Operation] on the instax mini Link™ App is activated.

## IMPORTANT SAFETY NOTICE

This product has been designed with safety in mind, and to provide safe operation when handled correctly and in accordance with the instructions in this User's Guide. It is important that both the product and the instax™ mini instant film cartridge (sold separately) are handled properly and used only to print photos as instructed in this User's Guide and instructions on the packaging of the instax™ mini instant film cartridge (sold separately). For your ease and safety, strictly follow the instructions in this User's Guide.

### WARNING

This symbol indicates danger, which could result in injury or death. Follow the instructions indicated to avoid damage to the printer or injury.

⚠ If one of the following cases occur, immediately unplug the supplied USB Type-C cable, turn the printer off, refrain from any further use of the printer and call the applicable Fujifilm Customer Service Center:

- The printer becomes hot, emits smoke, has a burnt smell, or otherwise seems abnormal.
- The printer is dropped into water, or foreign objects like water or metal get inside the printer.

⚠ This device contains a battery. Do not subject it to heat, throw it into an open fire, drop it or subject it to impact. Doing so could cause the printer to explode.

⚠ Never get this product wet or handle it with wet hands. Doing so may result in an electric shock.

⚠ Keep out of the reach of small children. This product could cause injury in the hands of a child.

### CAUTION

This symbol indicates a situation that may lead to injury or physical damage if ignored or incorrectly handled.

⚠ Never attempt to take this product apart. You may be injured.

⚠ If the printer is not functioning correctly, to avoid injury do not attempt to repair yourself.

⚠ If this product is dropped or damaged so that the inside is showing, do not touch it. Contact the applicable Fujifilm Customer Service Center.

⚠ Do not touch any parts within the inside of the Film Door. This may cause injury.

⚠ Promptly unplug the USB Type-C cable once battery is fully charged.

⚠ Do not cover or wrap the printer or the AC power adapter (sold separately) in a cloth or blanket. This can cause heat to build up and distort the casing or cause a fire.



The "CE" mark certifies that this product satisfies the requirements of the EU (European Union) regarding safety, public health, environment and consumer protection. ("CE" is the abbreviation of Conformité Européenne.)

## Printer Care

### ■ Handling the Printer

- ⚠ CAUTION - Do not expose to excessive heat such as sunshine, fire or the like during use, storage or transportation. An explosion or leakage of flammable liquid or gas could result. Also, ensure proper disposal in accordance with the instructions below.
- ⚠ CAUTION - Do not remove or attempt to remove the printer lithium battery. Without limitation, do not expose or attempt to expose the printer or the printer lithium battery to fire or a hot oven. Do not attempt to damage, mechanically crush or cut the printer lithium battery, as an explosion could result.
- ⚠ CAUTION - Do not subject to extremely low air pressure at high altitude. An explosion or the leakage of flammable liquid or gas could result.

### ■ Printer Care

1. Do not open the Film Door until all 10 film sheets of the instax™ mini instant film cartridge (sold separately) have been used. Opening the Film Door will expose any remaining, unused film sheets, rendering the remainder of the film cartridge unusable.
2. Your printer is a precision instrument. Do not get it wet or drop it. Also, do not expose it to sand, dust or dirt.
3. Do not use cleaning products or solvents such as those with bleach or alcohol to remove dirt. Wipe with a damp cloth if and as necessary.
4. Keep the film chamber and printer interior clean to avoid damaging the film.
5. In hot weather, do not leave your printer in hot places such as in a car or on the beach. Do not leave it in damp places or places where weather exposure could result.
6. Moth repellent gas such as naphthalene may affect your printer and instant photos. Store your printer and instant photos in a place where exposure to harmful cleaning or other household elements will be avoided.
7. Note that the temperature range within which your printer can be used is 41°F to 104°F (5°C to 40°C).
8. Take great care to ensure that your instant photos do not violate copyright, image rights, privacy or other personal rights and do not offend public decency. Actions that violate the rights of others, that are contrary to public decency, or that constitute a nuisance may be punishable by law or otherwise legally actionable.
9. This printer is for general household use. It is not suitable for commercial photography and other applications where a large number of prints are needed.

### ■ Charging the Battery

The battery is not charged at shipment. Charge the battery completely before use.

Charge the battery using the supplied USB Type-C cable and a USB AC adapter (sold separately) from your Smartphone. Charging times will increase at ambient temperatures below 50°F (10°C) or above 95°F (35°C). Do not attempt to charge the battery in environments with temperatures above 104°F (40°C); at temperatures below 41°F (5°C), the battery will not charge.

### ■ Battery Life

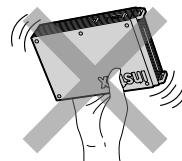
At normal temperatures, the battery can be recharged about 300 times. A noticeable decrease in the length of time the battery will hold a charge indicates that it has reached the end of its service life.

### ■ Caution: Handling the Battery

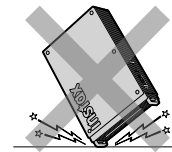
⚠ CAUTION - The battery and printer body may become warm to the touch after extended use. This is normal.

### ■ Required certification markings are located inside the film chamber.

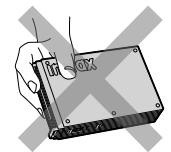
### ■ Cautions During Printing



Do not shake the printer while printing.



Do not drop the printer while printing.



Do not cover the Film Ejection Slot while printing.

### ■ instax™ mini Instant Film and Print Care

This printer uses instax™ mini instant film, sold separately. See instructions on the packaging of the instax™ mini instant film cartridge (sold separately).

Follow all instructions for safe and proper use, including:

1. Keep the film in a cool place. Do not leave the film in a place where the temperature is extremely high (e.g., in a closed car) for many hours.
2. Do not puncture, tear, or cut instax™ mini instant film. If film becomes damaged, do not use.
3. When you load a film cartridge, use the film as soon as possible.
4. If the film has been kept in a place where the temperature is extremely high or low, bring it to room temperature before loading or starting to print photos.
5. Be sure to use the film before the expiration or "Use Before" date.
6. Avoid airport checked luggage inspection and other strong X-ray illumination. Such exposure may cause fogging and otherwise affect your unused film. Carrying your printer and film onto an aircraft in your carry-on luggage is recommended. (Check with each airport for more information.)
7. Avoid exposing the developed instant photos to strong light, and keep them in a cool, dry place.
8. ⚠ CAUTION - Do not puncture or cut this film as it contains a small amount of caustic paste (high alkaline). Never let children or animals put the film into their mouth. Also pay attention so that the paste does not come into contact with skin or clothes.
9. ⚠ CAUTION - If the paste inside the film comes into contact with skin or clothes, immediately wash off with plenty of water. If the paste comes into contact with the eyes or mouth, immediately wash the area with plenty of water and contact a doctor. Note that the alkaline inside the film remains active for about 10 minutes after the photo has been printed.

■ ⚠ **CAUTION - When Handling instax™ mini Instant Film and Photos**

See below for film activities to be avoided.



**Bluetooth® Devices: Cautions**

**IMPORTANT:** Read the following notices before using the product's built-in Bluetooth® transmitter.

■ **Use only as part of a Bluetooth® network.**

Do not use in applications requiring a high degree of reliability, for example in medical devices or other systems that may directly or indirectly impact human life. When using the device in computer and other systems that demand a greater degree of reliability than Bluetooth® networks, be sure to take all necessary precautions to ensure safety and prevent malfunction. FUJIFILM Corporation and its affiliates do not accept liability for damages resulting from unauthorized use.

■ **Use only in the country in which the device was purchased.**

This device conforms to regulations governing Bluetooth® devices in the country in which it was purchased. Observe all location regulations when using the device. FUJIFILM Corporation and its affiliates do not accept liability for problems arising from use in other jurisdictions.

■ **Wireless data (images) may be intercepted by third parties.**

FUJIFILM Corporation and its affiliates are not responsible for intercepted transmissions, or for unintended image uses.

■ **Do not use the device in locations subject to magnetic fields, static electricity, or radio interference.**

Do not use the transmitter in the vicinity of microwave ovens or in other locations subject to magnetic fields, static electricity, or radio interference that may prevent reception of wireless signals. Mutual interference may occur when the transmitter is used in the vicinity of other wireless devices operating in the 2.4 GHz band.

■ **The Bluetooth® transmitter operates in the 2.4 GHz band. The maximum radio-frequency power is 9.10 mW.**

■ **This device operates on the same frequency as commercial, educational, and medical devices and wireless transmitters.**

It also operates on the same frequency as licensed transmitters and special unlicensed low-voltage transmitters used in radio-frequency identification tracking systems for assembly lines and in other similar applications.

■ **To prevent interference with the above devices, observe the following precautions.**

Confirm that the radio-frequency identification transmitter is not in operation before using this device. If you notice that this device causes interference in low-voltage radio-frequency identification tracing systems, contact a Fujifilm representative.

■ **The following may be punishable by law:**

- Disassembly or modification of this device.
- Removal of device certification labels.

■ **For customers in the USA:**

Contains FCC ID : W2Z-03000015

**FCC Statement**

This device complies with part 15 of the FCC Rules. Operation is subject to the following two conditions: (1) This device may not cause harmful interference, and (2) this device must accept any interference received, including interference that may cause undesired operation.

For more information, access the website below.

[https://instax.com/support/declaration/#smartphone\\_printers](https://instax.com/support/declaration/#smartphone_printers)

**CAUTION**

This equipment has been tested and found to comply with the limits for a Class B digital device, pursuant to Part 15 of the FCC Rules. These limits are designed to provide reasonable protection against harmful interference in a residential installation. This equipment generates, uses, and can radiate radio frequency energy and, if not installed and used in accordance with the instructions, may cause harmful interference to radio communications. However, there is no guarantee that interference will not occur in a particular installation. If this equipment does cause harmful interference to radio or television, which can be determined by turning the equipment off and on, the user is encouraged to try to correct the interference by one or more of the following measures:

- Reorient or relocate the receiving antenna.
- Increase the separation between the equipment and receiver.
- Connect the equipment into an outlet on a circuit different from that to which the receiver is connected.
- Consult the dealer or an experienced radio/TV technician for help.

Changes or modifications not expressly approved by Fujifilm responsible for compliance could void the user's authority to operate the equipment.

This transmitter must not be co-located or operated in conjunction with any other antenna or transmitter.

The available scientific evidence does not show that any health problems are associated with using low power wireless devices. There is no proof, however, that these low power wireless devices are absolutely safe. Low power wireless devices emit low levels of radio frequency energy (RF) in the microwave range while being used. Whereas high levels of RF can produce health effects (by heating tissue), exposure of low-level RF that does not produce heating effects causes no known adverse health effects. Many studies of low-level RF exposures have not found any biological effects. Some studies have suggested that some biological effects might occur, but such findings have not been confirmed by additional research. This device has been tested and found to comply with FCC radiation exposure limits set forth for an uncontrolled environment and meets the FCC radio frequency (RF) Exposure Guidelines.

**Notes on the Grant**

To comply with Part 15 of the FCC Rules, this product must be used with a Fujifilm-provided USB Type-C cable.

**For customers in Canada:**

Contains IC: 7736B-03000014

**ISED statement:**

This device complies with Innovation, Science and Economic Development Canada's licence-exempt RSS(s). Operation is subject to the following two conditions:

- (1) This device may not cause interference, and
- (2) This device must accept any interference, including interference that may cause undesired operation of the device.

**CAN ICES-3 (B)/NMB-3 (B)**

This device contains licence-exempt transmitter(s)/receiver(s) that comply with Innovation, Science and Economic Development Canada's licence-exempt RSS(s). Operation is subject to the following two conditions:

This device may not cause interference.  
This device must accept any interference, including interference that may cause undesired operation of the device.  
The available scientific evidence does not show that any health problems are associated with using low power wireless devices. There is no proof, however, that these low power wireless devices are absolutely safe. Low power wireless devices emit low levels of radio frequency energy (RF) in the microwave range while being used. Whereas high levels of RF can produce health effects (by heating tissue), exposure of low-level RF that does not produce heating effects causes no known adverse health effects. Many studies of low-level RF exposures have not found any biological effects. Some studies have suggested that some biological effects might occur, but such findings have not been confirmed by additional research. This device has been tested and found to comply with ISED radiation exposure limits set forth for an uncontrolled environment and meets RSS-102 of the ISED radio frequency (RF) exposure rules.

### Proper Disposal – US, Canada and Latin America



Disposal of Electric and Electronic Equipment in Private Households  
Disposal of used Electrical & Electronic Equipment (Applicable in the European Union and other European countries with separate collection systems)

This symbol on the product, the full version of the User's Guide, Quick Start Guide, in the limited product warranty, and/or on its packaging indicates that this product shall not be treated as household waste.

Instead it should be taken to an applicable collection point for the recycling of electrical and electronic equipment.

By ensuring this product is disposed of correctly, you will help prevent potential negative consequences to the environment and human health, which could otherwise be caused by inappropriate waste handling of this product.

The recycling of materials may help to conserve natural resources.

For more detailed information about recycling of this product, please contact your local city recycling office, your household waste disposal service or the authorized FUJIFILM dealer from which you purchased the product.

For proper disposal in the United States at product end-of-life, please contact 1-800-800-3854 Option #1 INSTAX.

For proper disposal in Canada at product-end-of-life, please contact 1-800-461-0416.

For proper disposal in Latin America at product end-of-life, please contact your local FUJIFILM distributor or dealer for disposal instructions.

### Information for Fujifilm in the United States

FUJIFILM North America Corp.  
200 Summit Lake Drive  
Valhalla, New York 10595, USA  
1-800-800-3854 Option #1 INSTAX

### Information for Fujifilm in Canada

FUJIFILM Canada Inc.  
600 Suffolk Court  
Mississauga, Ontario L5R 4G4, Canada  
1-800-461-0416

If you have any inquiries about this product, please contact the applicable Fujifilm Customer Service/Repair Center, or access the website below.

<https://www.fujifilm.com/>

The Bluetooth® word mark and logos are registered trademarks owned by the Bluetooth® SIG, Inc., and any use of such marks by Fujifilm is under license.

### Independent JPEG Group (IJG) Licenses

The software used in the instax mini Link+™ Smartphone Printer is based in part on the work of the Independent JPEG Group.

Third-party trademarks referenced herein are the property of their respective owners and no endorsement or affiliation is claimed or implied.

*FUJIFILM, instax, instax mini Link+, and instax AiR Studio* are registered trademarks or trademarks of FUJIFILM Corporation and its affiliates.

© 2026 FUJIFILM Corporation. All rights reserved.

# FUJIFILM

## FUJIFILM Corporation

7-3, AKASAKA 9-CHOME, MINATO-KU, TOKYO 107-0052, JAPAN